



The G Sub is a high-performance subwoofer for universal applications and produces a high and undistorted low-range sound level starting at 35 Hz. The special cabinet design guarantees a long throw and low power compression. Depending on the requirement, the user can choose between two superb 18" ND drivers – the 1800 watt version with a 135 mm voice coil and 70 mm excursion (peak to peak) and the smaller 1000 watt version with a 100 mm voice coil. The G-Sub convinces through ideal handling characteristics and can be used both horizontally and vertically. For transportation, a wheelboard can be attached to the frontside.

PRODUCT SPECIFICATIONS

Speaker Components	18" Neodym
Description	Bass Extension
Powerhandling AES / Peak	1800 Watt / 5400 Watt
Impedance nominal	8 Ω
SPL 1m 1 Watt / Peak	103 dB / 138 dB (1,8 kW version) 103 dB / 136 dB (1,0 kW version)
Usable Range	32 Hz - 120 Hz
Tuning Frequency Excursion minimum	42 Hz
Connectors	2 x Neutrik Speakon 4-pole Coding: 1 +/- HiMid, 2 +/- Sub
Handles	2 x 2D handle - side 1 x 2D corner handle
Fittings	M20 on top and side Wheelboard fittings
Weight	43,0 kg (1,8 kW version) 38,0 kg (1,0 kW version) + 7,5 kg (wheelboard)
Size height x width x depth	69,8 x 51,2 x 68,0 cm
Order No.	00600/1,8 kW 00600/1,0 kW



Heavy-duty metal grille.

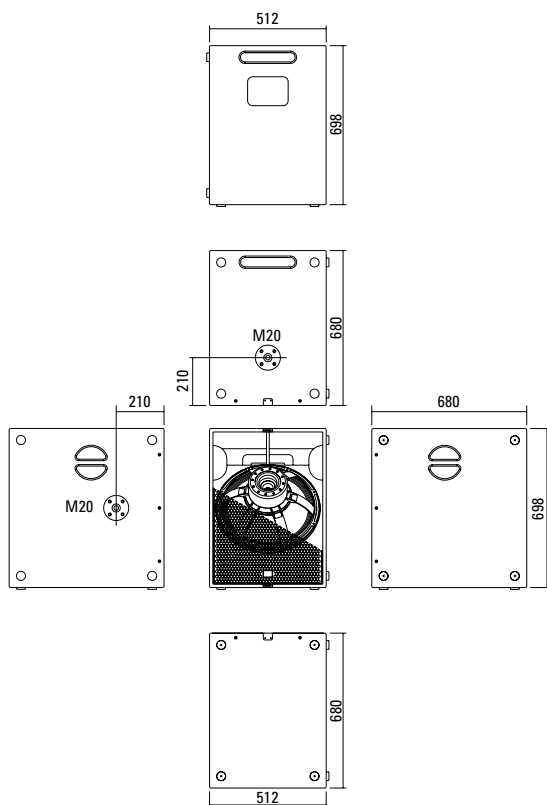


Two large bar handles for easy handling.



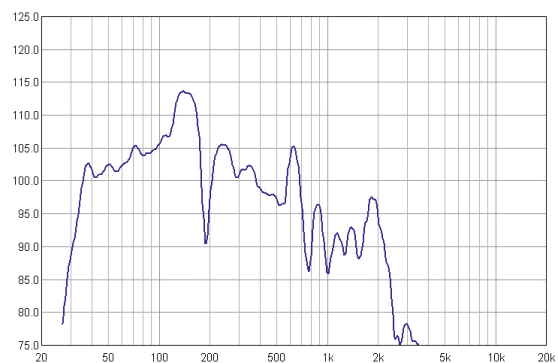
Convenient corner handle.

DIMENSIONS

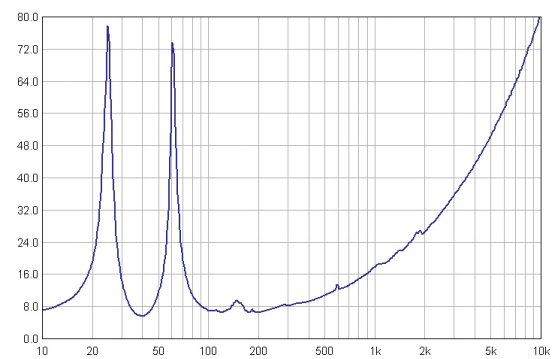


MEASUREMENTS

Frequency Response (Flat)



Impedance



Controller Setups are available on our website:

<http://www.seeburg.net/downloads.php>

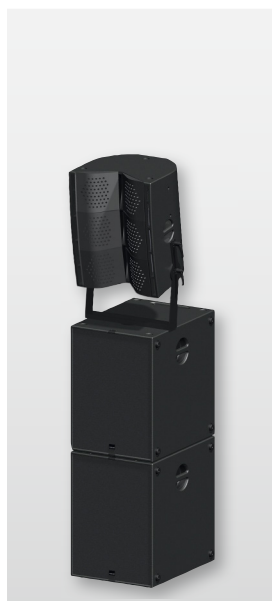
APPLICATIONS



2 x G Sub / K 24



G Sub / GL 24



2 x G Sub / G3



G Sub / TSM 12

ACCESSORIES G Sub

Speaker Pole

M20, with wind up, K&M

Order No. **03023**



M20, adjustable, K&M

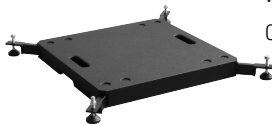
Order No. **03022**



Groundstacking Board

for G Sub / K Sub 1801 / TSE Sub
with extendable legs

Order No. **01394**



Ceiling Mount

for Subwoofer

Order No. **08129**



Cover

for G Sub, padded

Order No. **01232**



Wheelboard

for G Sub / K Sub 1801 / TSE Sub

Order No. **01260**

